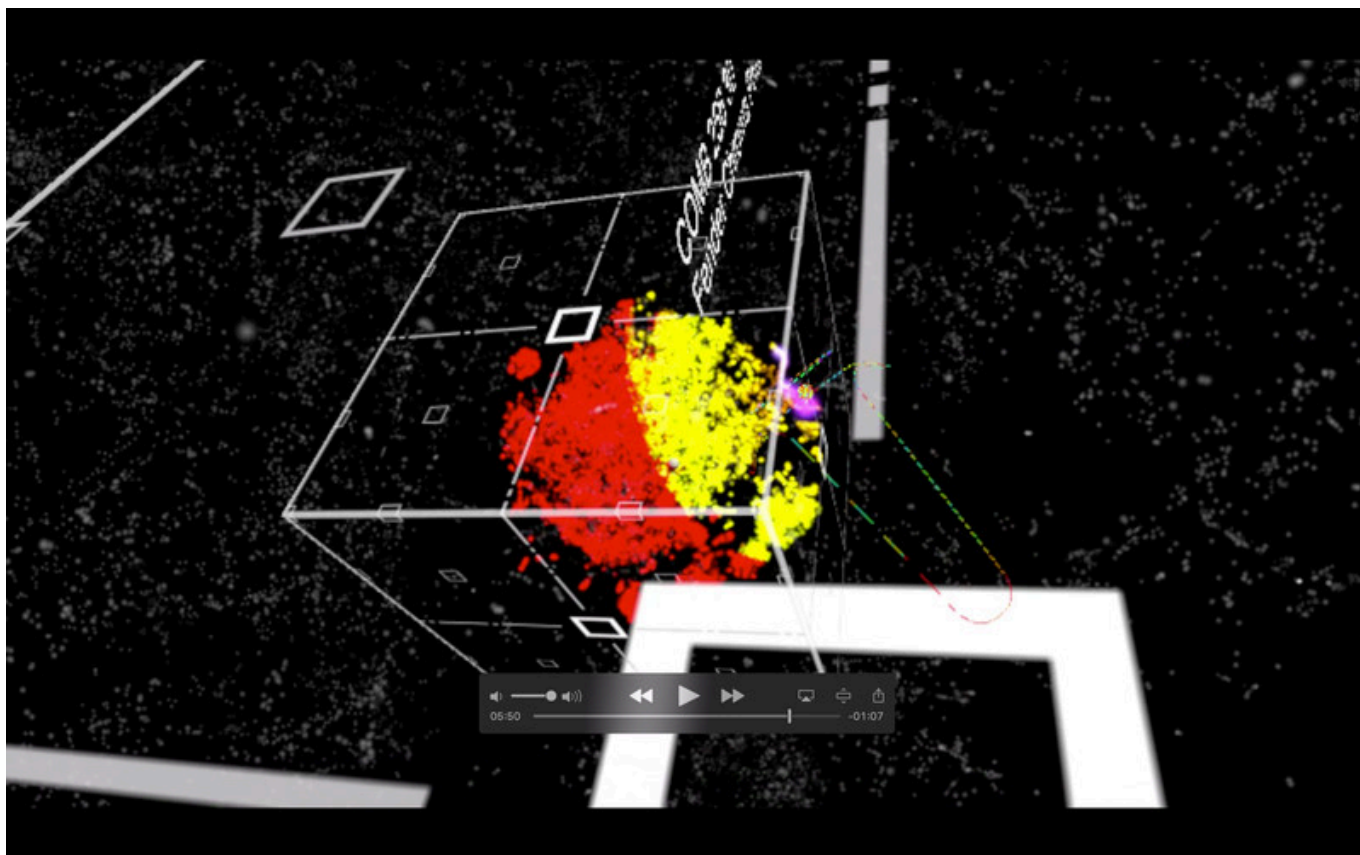


---

## BR Blue Class 121 Add-On Livery Crack Exe



Download ->->-> <http://bit.ly/2SGPoXO>

### About This Content

**\*NOTE\*** This pack is available in the in-game store under the Marketplace tab. You are strongly recommended to find the product there and make your purchase from within the game.

In order to be able to use this add-on livery product, you **MUST** first own the Network SouthEast Class 121 DMU Add-On. If you check in the in-game store it will verify if you own it before you purchase.

Arguably the most useful of first generation diesel multiple units (DMUs), the Class 121 'Bubble Car' comes to Train Simulator in distinctive BR Blue livery.

The unusual single-car units were manufactured by Pressed Steel Company from 1960 onwards and introduced by British Rail for use mainly on the Western Region and around London on suburban and branch line duties. Their distinctive exhaust pipes designed to fit around a large four-digit headcode indicator box made these units fondly regarded by rail fans for their unpretentious appearance and old-fashioned interior and performance characteristics.

The 'Bubble Cars' became familiar for running Network SouthEast services and upon privatisation of British Rail, the fleet was operated by only one passenger company – Silverlink – with several more units in departmental duties with Railtrack. Today, two Class 121 models remain in revenue generating service with Chiltern Railways, representing the last chance to ride on 1960s slam-door stock on the main line in the UK and signifying a remarkably long life for these fans' favourite. Five motor cars also

---

remain in preservation across heritage railways in the UK.

---

Title: BR Blue Class 121 Add-On Livery

Genre: Simulation

Developer:

RailSimulator.com

Publisher:

Dovetail Games

Franchise:

Train Simulator

Release Date: 21 Jan, 2015

a09c17d780

**Minimum:**

**OS:**Windows® Vista / 7 / 8

**Processor:**Processor: 2.8 GHz Core 2 Duo (3.2 GHz Core 2 Duo recommended), AMD Athlon MP (multiprocessor variant or comparable processors)

**Memory:**2 GB RAM

**Graphics:**512 MB with Pixel Shader 3.0 (AGP PCIe only)

**DirectX®:**9.0c

**Hard Drive:**6 GB HD space

**Sound:**Direct X 9.0c compatible

**Other Requirements:**Broadband Internet connection

**Additional:**Quicktime Player is required for playing the videos

English













---

[Luna \[serial number\]](#)  
[FROG X BIRD activation code and serial number](#)  
[The Story Goes On Free Download](#)  
[Byte Chaser 32 bit crack](#)  
[Analogue: A Hate Story Activation Code \[Ativador\]](#)  
[Aquarium Simulator Download\] \[crack\]](#)  
[Rez Infinite \[key serial\]](#)  
[Voyage: Journey to the Moon Free Download \[Xforce keygen\]](#)  
[Sleeping Dogs - High Resolution Texture Pack \[FULL\]](#)  
[GRID 2 full crack \[Password\]](#)